

Certificate of Completion 2024

Hereby certifies that

Hunan gaofeng ceramic manufacturing co., ltd

Has completed the **HIGG FEM SELF-ASSESSMENT**

Worldly ID: 157128

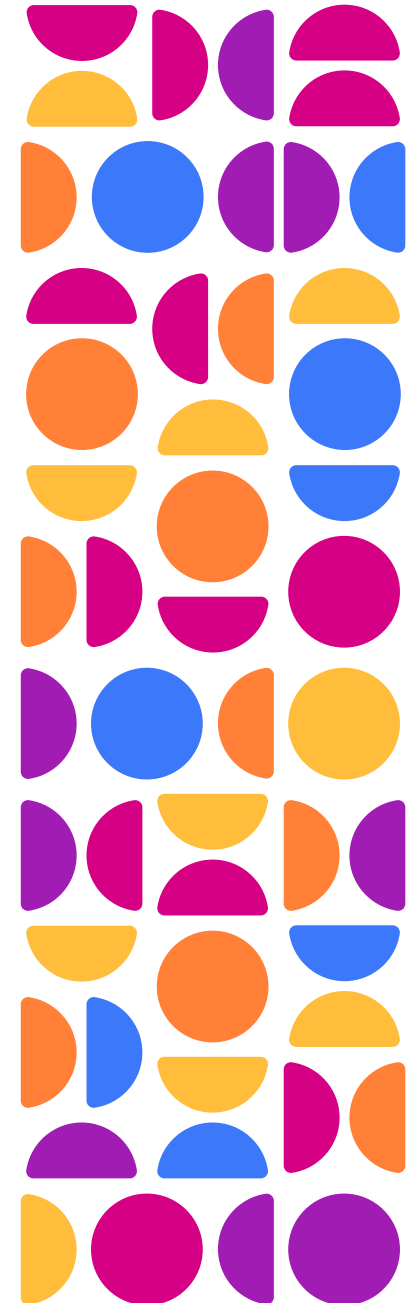
OS ID: _____



Cascale certifies that the facility named above utilizes the Higg Index to measure and grow its sustainability practice.

A handwritten signature in black ink, appearing to read "Colin Browne", is written over a horizontal line.

Colin Browne
Chief Executive Officer
Cascale



All Modules

Share Modules Request / Accept modules

- All Modules
- My Modules
- Shared With Me
- Receive Modules
- Modules Requested
- Modules Received
- Share your Modules
- My Shares
- Share Requests

My Saved Columns ▾										Save Columns	12 隱藏列 ▾
<input type="checkbox"/> ▾	Year ▾	Account Name ▾	Country ▾	Tags	Status ▾	Self ▾	Verified ▾	Modified ▾	Facility Fou... ▾	Actions	
	Filter... ▾			<input type="text"/>	Filter... ▾	Filter... ▾	Filter... ▾		Filter... ▾		
<input type="checkbox"/>	2023	Hunan gaofeng ceramic ma...	China	<input type="text" value="+ Tag"/>	ASC Assessment Completed	100% Posted	0% Not Posted	10/10/2024	No	⋮	
<input type="checkbox"/>	2024	Hunan gaofeng ceramic ma...	China	<input type="text" value="+ Tag"/>	ASC Assessment Completed	100% Posted	0% Not Posted	2/19/2025	No	⋮	
<input type="checkbox"/>	2022	Hunan gaofeng ceramic ma...	China	<input type="text" value="+ Tag"/>	ASC Assessment Completed	100% Posted		2/23/2023	No	⋮	
<input type="checkbox"/>	2021	Hunan gaofeng ceramic ma...	China	<input type="text" value="+ Tag"/>	ASC Assessment Completed	100% Posted		2/10/2022	No	⋮	

Actions

- View FEM
Share Assessment
Select Verifying Body
Reopen/Unpost Assessment

Downloads

- Data Downloads
Certificate



Developed by Cascale

Assessment

Assessment Completed (ASC) ID ...f00b7604c3dc

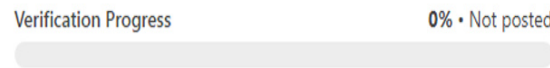
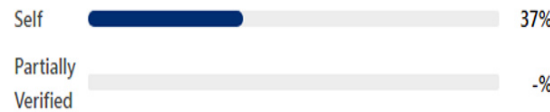


Table with 2 columns: Verifying Body, Contact. Row 1: Not Selected, -

Results

Scores >



For FEM 2024, verification only includes Level 1 questions. Level 1 questions inquire about foundational environmental practices like awareness and understanding of one's sources and systems.

Greenhouse Gas Emissions >

Total Absolute 4.934e+6 kg CO2e

Post Deadlines

Next Retail Ltd Jul 31 Verification

See All 3

Account

Name: Hunan gaofeng ceramic manufacturing co., ltd
Address: Yucha village Jiashu town, Liling City, Hunan province, China
Country: China
Contact: 35385431@qq.com
OS ID: -
Worldly (Higg) ID: 157128
Bluesign ID: -

Activity History

Need any help?

Greenhouse Gas Emissions

Not verified

Totals

4.934e+6 kg CO2e

Total Absolute

Energy Sources

4.934e+6 kg CO2e

Total Non-Renewable Emissions Generated

0 kg CO2e

Total Renewable Emissions

Biomass - general

0 kg CO2e

Air Emissions

0 kg CO2e

Total Generated

No data found